



ESHANYA
elite

Developers:
Eshanya Lifespaces

Site: ESHANYA ELITE, NR PANCHVATI CIRCLE,
GORWA, VADODARA.

M.: +91 **81416 00333**,
+91 **81417 00333**

Email:eshanyaskybreeze@gmail.com
www.eshanya.in

Architect:
Rahul Patel, Design Era

Structural Consultant:
Zarna Associates

Legal Consultant:
Bhoomik Goswami



ESHANYA
elite

2 BHK Apartments & Shops



*A Prime Location, Elegant Elevation
Premium Finish & Fixtures, Spacious Inside-out*

Located in Atladra, Safal Iris offers a pure residential campus thus offering exclusivity to the residents. This project is an offering from the Safal Group who are a well experienced and committed team of real estate developers with numerous successful projects in this part of Vadodara. You are assured of a home with a good quality finish, branded fittings and fixtures, spacious interiors, and timely completion.

Safal Iris shall indeed offer a rich lifestyle for you and your family today & forever !







Value Added Amenities Include:

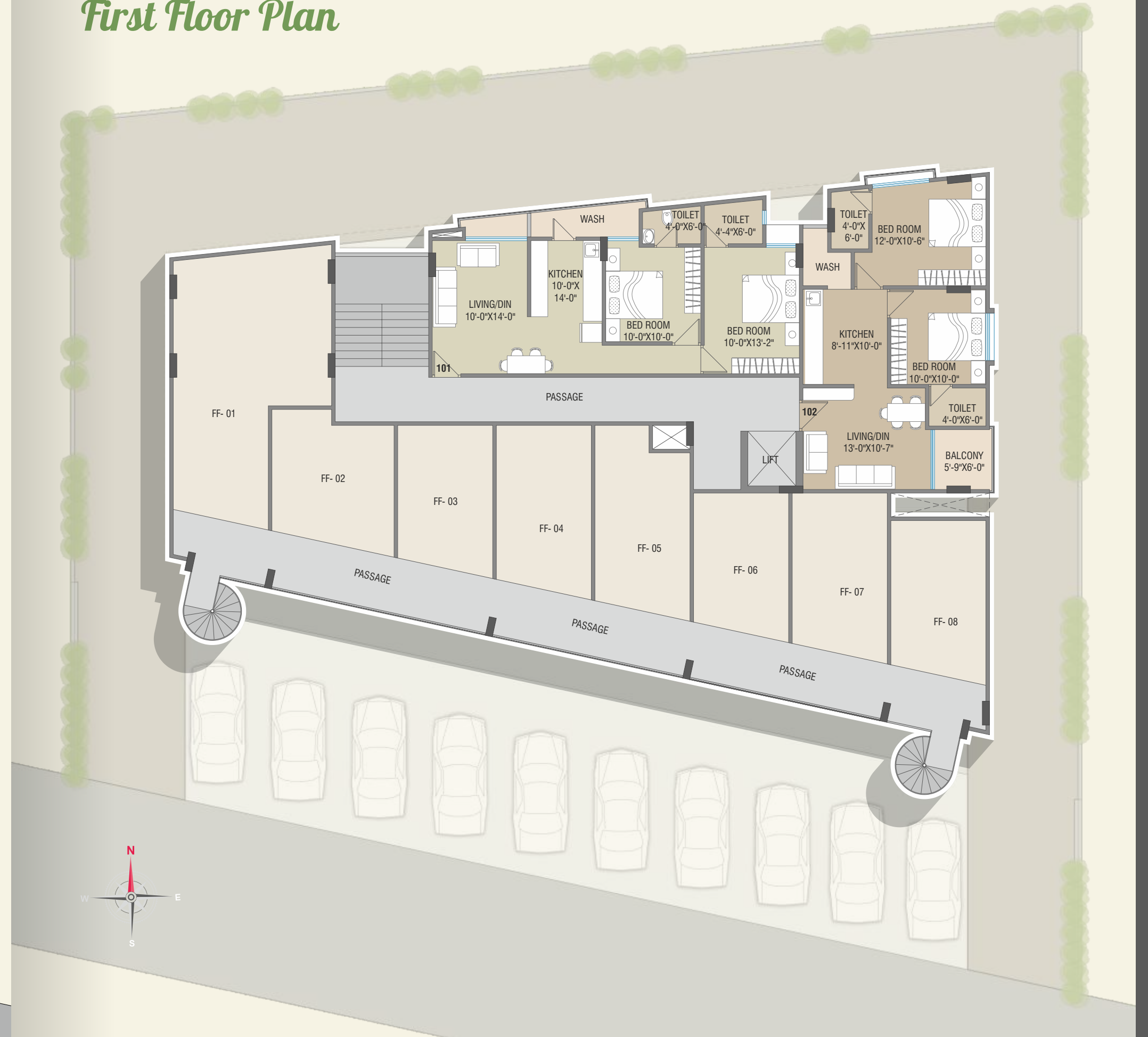
- Ground Floor Car Parking
- Basement Car Parking
- CCTV camera in common areas on ground floor
- Decorative entrance gate & compound wall
- Automatic standard Lift (2 nos.) in each Tower
- Power back-up for Lift
- Underground cabling for wire free campus
- 24 hours water supply with U.G. tank and O.H. tank with Borewell
- Anti-termite treatment
- Water proofing treatment on the terrace with china mosaic
- Individual name plates at ground floor
- Round the clock security



Ground Floor Plan



First Floor Plan



Typical Floor Plan



Specifications

Structure: Well designed RCC frame structure as per structural engineer's design

Flooring: Vitrified flooring in living, dining, kitchen and all bedrooms

Kitchen: Exclusive Granite platform with SS kitchen sink and designer tiles upto lintel level. Kotastone flooring for wash area.

Bathrooms: Designer wall tiles and anti-skid ceramic tiles flooring. Standard quality CP fittings & vessels. Table top ceramic basin. Powder coated aluminium ventilation.

Plumbing: Systematic wall concealed CPVC/UPVC plumbing

Doors: Decorative main door with standard safety lock and fittings. All other internal doors are flush doors with both side laminates.

Windows: Powder coated Aluminum section windows. Mosquito net and safety grills in both bedrooms.

Electrification: Concealed copper ISI wiring & branded modular switches. Sufficient electrical points in all rooms. TV point in living room. MCB in main distribution board. Geyser point in each bathroom.

Finishing: Internal smooth finish plaster with Putty & Distemper on internal walls, External double coat plaster with weather proof exterior paint.

Disclaimer: All plans are subject to amendments and approval by the relevant authorities. All photography and computer imagery are artist's impression and are provided for illustrative and indicative purposes only. While every reasonable care has been taken in providing this information, the developers cannot be held responsible for any inaccuracy. Subject to Vadodara Jurisdiction.